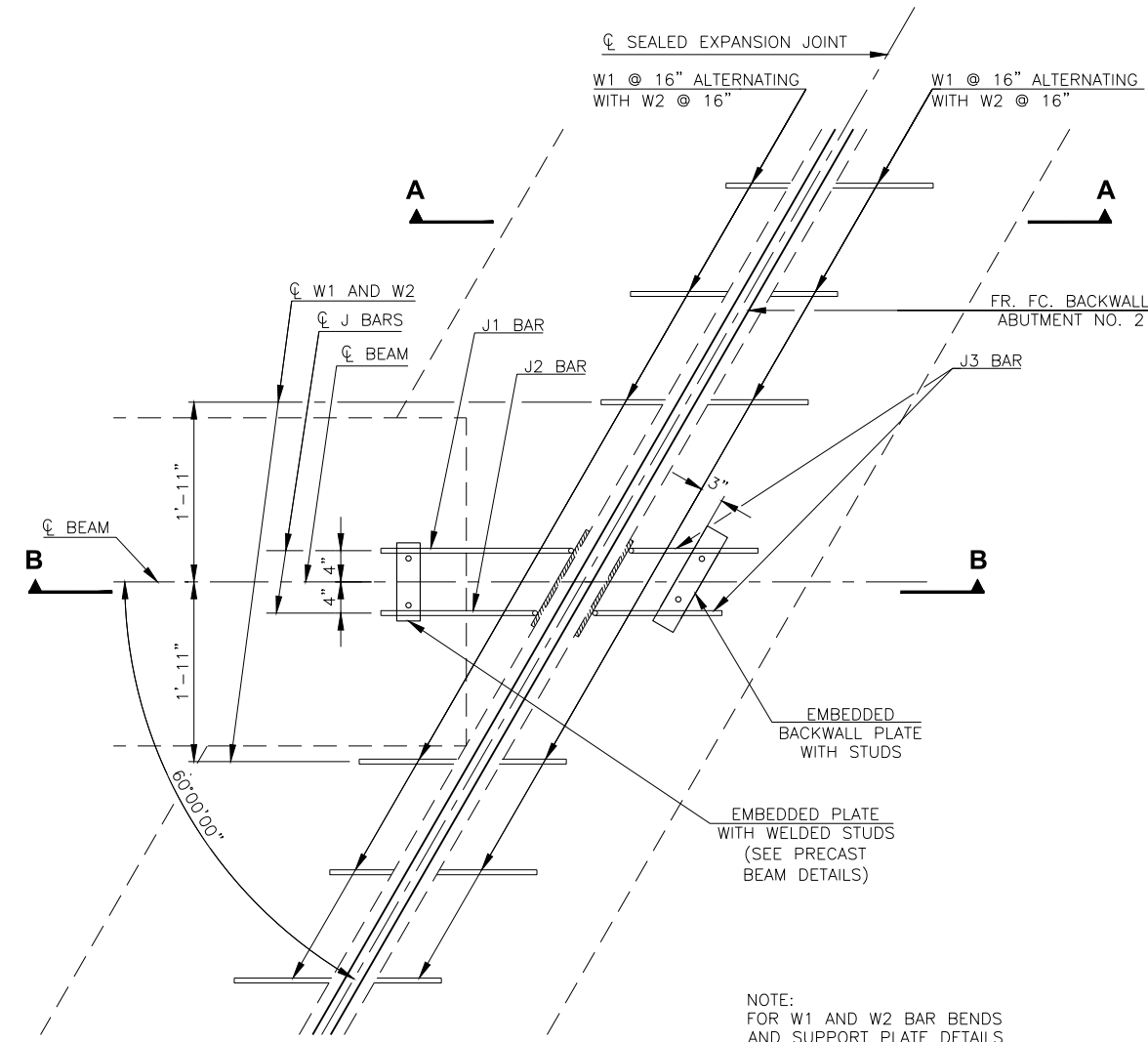


| DESCRIPTION | REVISIONS | DATE |
|-------------|-----------|------|
| | | |
| | | |
| | | |

EXPANSION JOINT SETTING SCHEDULE

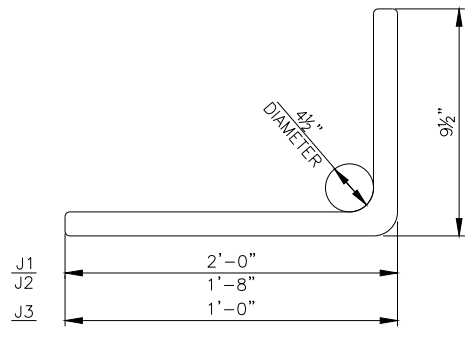
| EXP. JOINT OPENING | TEMPERATURE °F |
|--------------------|----------------|
| 2 3/8" | 0° |
| 2 1/4" | 11° |
| 2 1/8" | 27° |
| 2" | 43° |
| 1 7/8" | 59° |
| 1 3/4" | 75° |
| 1 5/8" | 91° |
| 1 1/2" | 107° |
| 1 3/8" | 120° |



PLAN

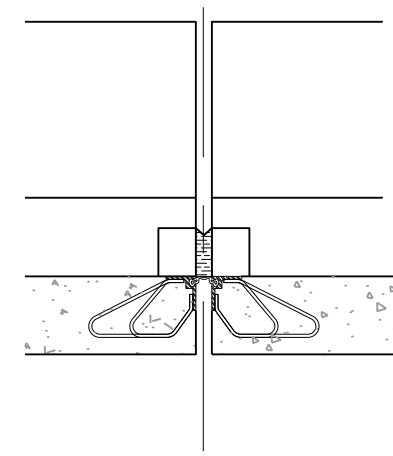
NOTE: FOR W1 AND W2 BAR BENDS AND SUPPORT PLATE DETAILS SEE STD. EJ-DTL.

① 2" NOMINAL JOINT OPENING AT AMBIENT TEMPERATURE OF 43°. SEE EXPANSION JOINT SETTING SCHEDULE.

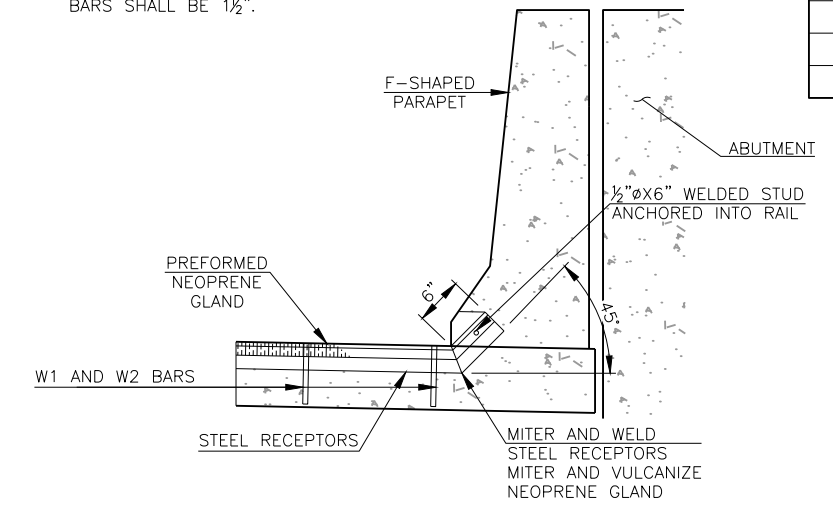


SUPPORT BAR DETAILS

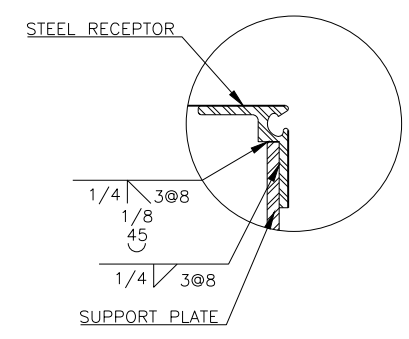
NOTE: THE DIAMETER OF THE J BARS SHALL BE 1 1/2".



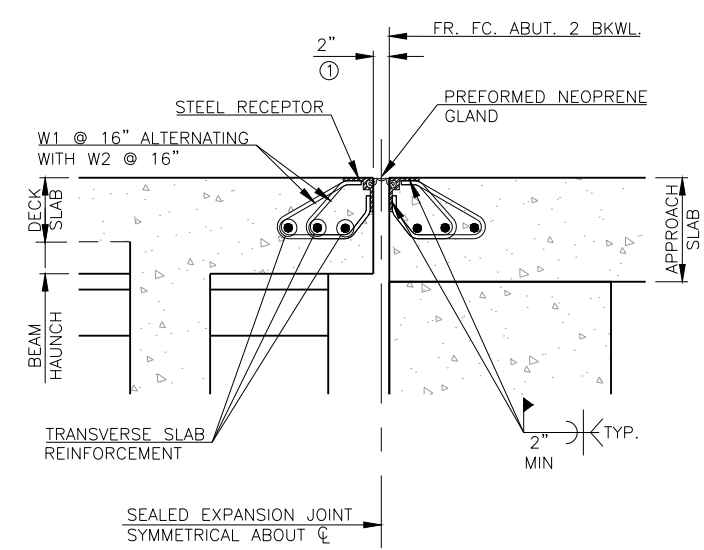
ELEVATION



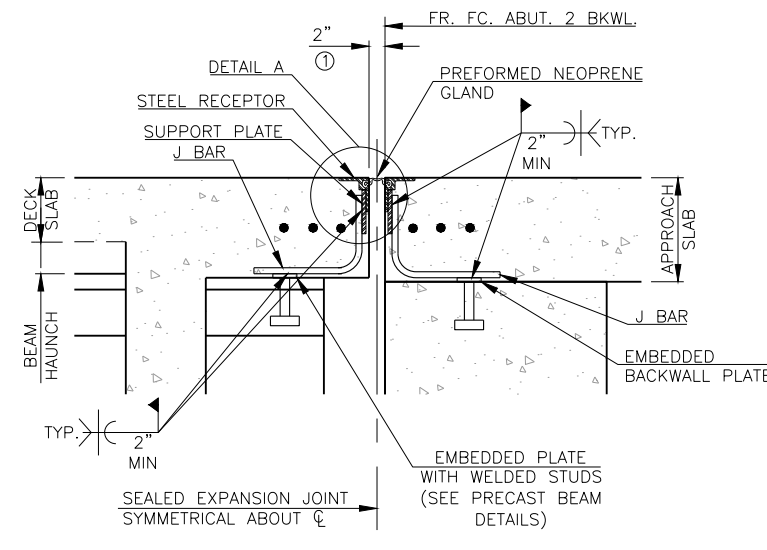
SECTION AT TRAFFIC RAIL



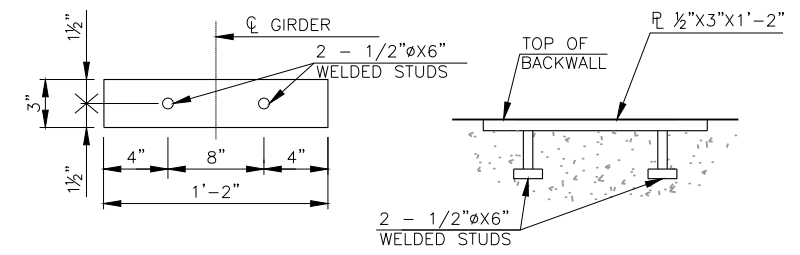
DETAIL A



SECTION A-A



SECTION B-B



AT BACKWALL OF ABUTMENT NO. 2

BACKWALL PLATE DETAILS

NOTE: INCLUDE ALL COST OF EXPANSION JOINT SUPPORT PLATES AND WELDED STUDS IN THE UNIT PRICE BID FOR STRUCTURAL STEEL.

| | | | |
|---------|--------|--|------------------------------|
| DESIGN | T.A.C. | OKLAHOMA CITY BOULEVARD OVER CLASSEN BLVD. | OKLAHOMA COUNTY BRIDGE A & B |
| DRAWN | R.A.P. | | |
| CHECKED | T.A.C. | | |
| APPROV. | T.A.C. | | |
| SQUAD | CEC | | |

EXPANSION JOINT DETAILS